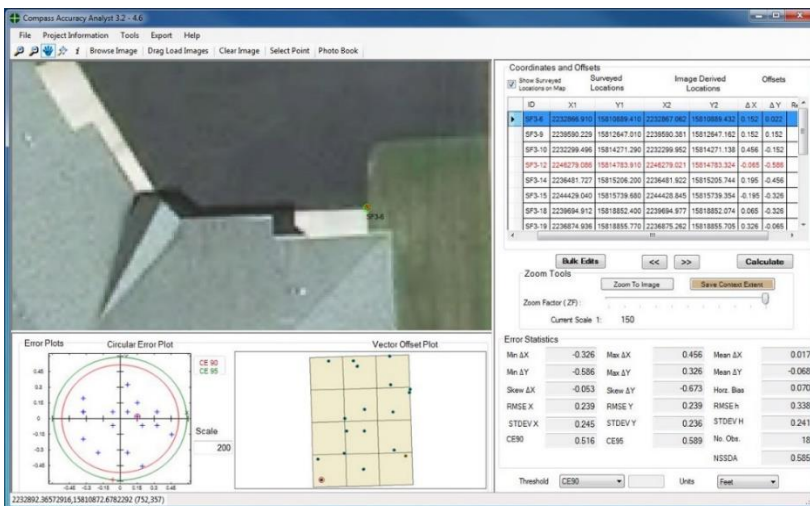


# CompassAA

## The Right Choice for Accuracy Analysis

CompassAA is a simple, fast, and complete workflow solution to verify the accuracy and quality of orthophotos.



- Streamlined Accuracy and Quality Control
- Comprehensive Analysis Reports
- Cost-effective Verification
- Compliance with NSSDA, ASPRS, NM AS, and MIL

Automatically prove what you are producing, delivering, buying, or using meet your accuracy requirements.

Use CompassAA to meet accuracy standards, produce reports that authoritatively document deliverables, and verify that internal data meet specifications and meet requirements for accurate, reliable orthophotos.

## BENEFITS:

- **Streamlined Accuracy and QC** – CompassAA is a comprehensive orthophoto verification and quality control review tool
- **Professional Documentation** – Comprehensive reports from CompassAA support the accuracy and quality of products
- **Differentiate Yourself From the Competition** – Cost-effectively verify that all ortho products meet specifications and produce the standardized reports to prove it
- **Compliance** – Statistical results satisfy all major accuracy standards (NSSDA, ASPRS, NMAS, and MIL)
- **No Lost Time** – Quickly installed and mastered, with CompassAA your team can implement and produce within hours
- **Standalone** – Does not depend on other software tools or platforms for implementation and operation
- **Shared Analytics** – Accuracy and QC results are easily understood by producers, customers, and users
- **Understand** – Through effective methods, tools, and reports, users have a better understanding of product accuracy
- **Intuitive and Dynamic** – Easily mastered user interface for zooming, panning, and trail tracking controls
- **Flexible** – Options control, ancillary data loading, image chip generation, and more!



System Requirements: CompassAA™ and CompassTA™ are standalone software that runs on Microsoft Windows platforms with OS versions from Windows XP SP2 to Windows 10 Professional 64-bit. ☑ CPU – 1 GHz or faster ☑ Memory – 1 GB or more ☑ Disk – Internal storage, attached external disk or high performance network storage. ☑ Graphics – Dedicated GPU is recommended. Resolution of 1280 x 1024 or higher is required. ☑ If not already installed and operating, the workstation needs to be updated to Microsoft .NET Framework 4.5.2. The installer will detect an older version and ask if you want it to update.