



OneCompass

Mobile Mapping

Powered By
CompassData

CompassTools

SERVICES - DATASHEET

OneCompass provides comprehensive Mobile Mapping Services with the Trimble MX7 ranging from collection to geodatabase management. Mobile mapping is a valuable mapping-grade tool. Projects include initially mapping of a region, correcting omissions or discrepancies in existing data, temporal evaluations, and ground control extraction.

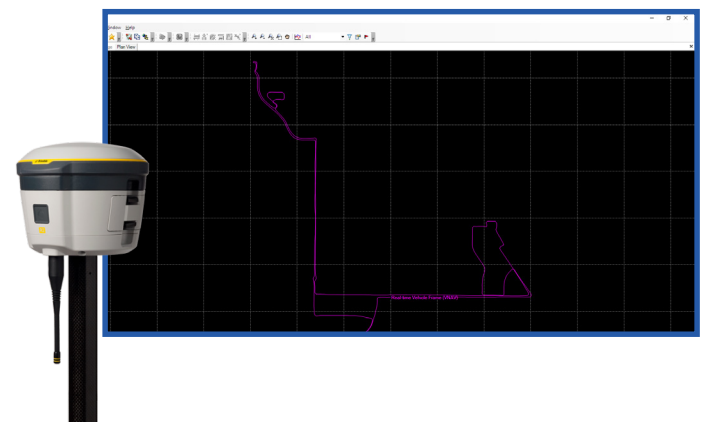
Collection

Collection of Mobile Mapping Imagery/Data is completed with the Trimble MX7. Mission-plans are carefully created based on project specifications, target features, areas of interest, and environmental conditions. If necessary, GNSS base stations are setup and ground control points collected for optimal accuracy results.



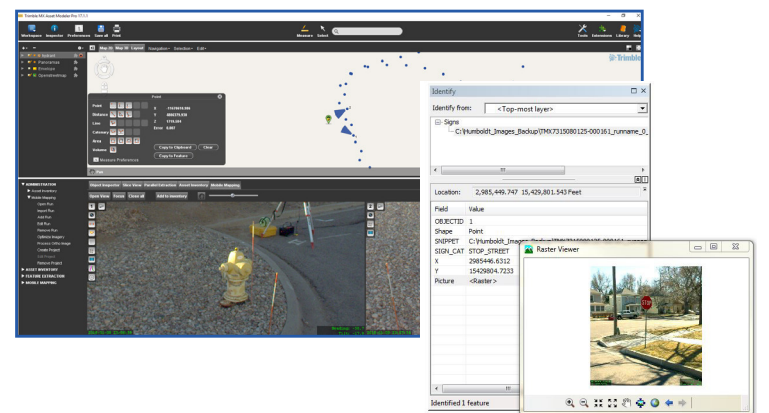
Processing

Mobile Mapping trajectory georeferencing takes place within Applanix POSpac MMS. Whether CompassData or a customer collects the data, post processing is a fundamental part of an accurate result.



Feature Extraction

We geolocate, measure, visually inspect, and catalog target features from Mobile Mapping imagery in Trimble MX software. Features are recorded in vector layers as points lines or polygons. We delivery comprehensive geodatabases customized to a specific customer or project in any vector format desired.



Web Publishing

OneCompass publishes Mobile Mapping Imagery to the Web. We help manage and edit data prior to publishing and consult customers on the best hosting options for their needs.

